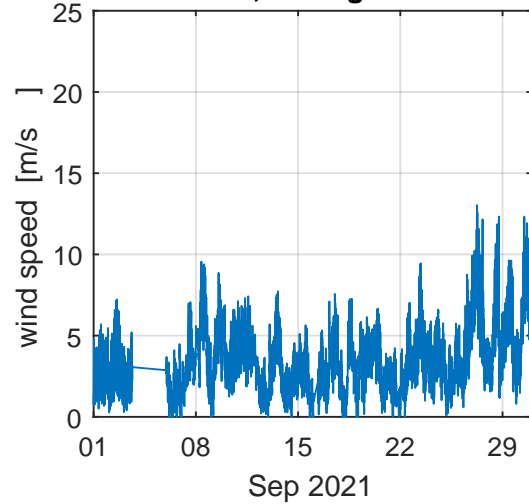
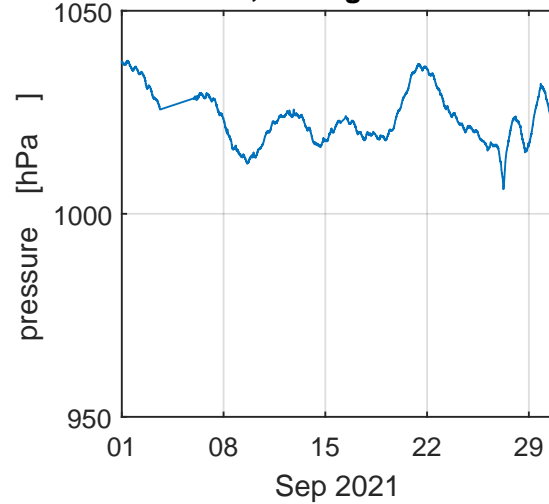


ERU met data for Sep 2021; summary

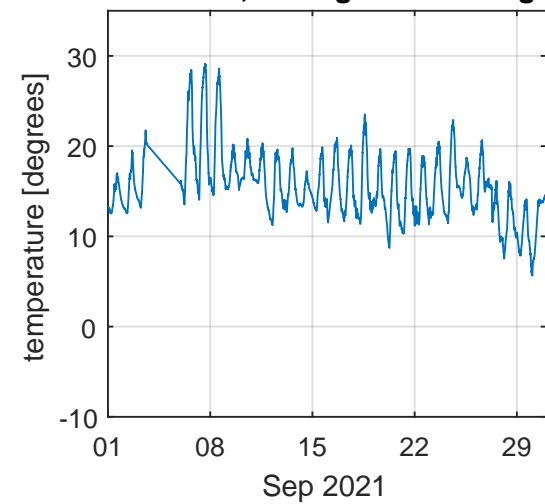
Twr 4 @ 18 m; average = 3.49 m/s



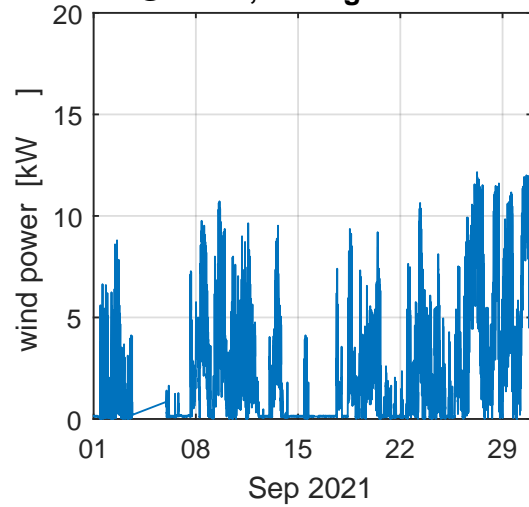
R111 @ 3 m; average = 1023.44 hPa



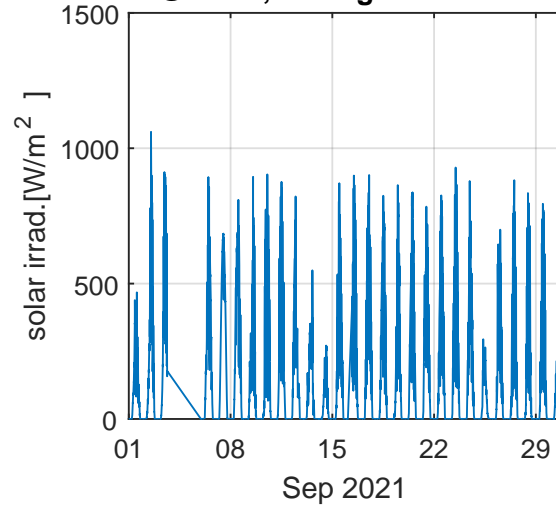
R111 @ 3 m; average = 15.59 degrees



H15 @ 18 m; average = 2.27 kW



R111 @ 3 m; average = 135.24 W/m²



R111 @ 3 m; average = 90.53 %rh

